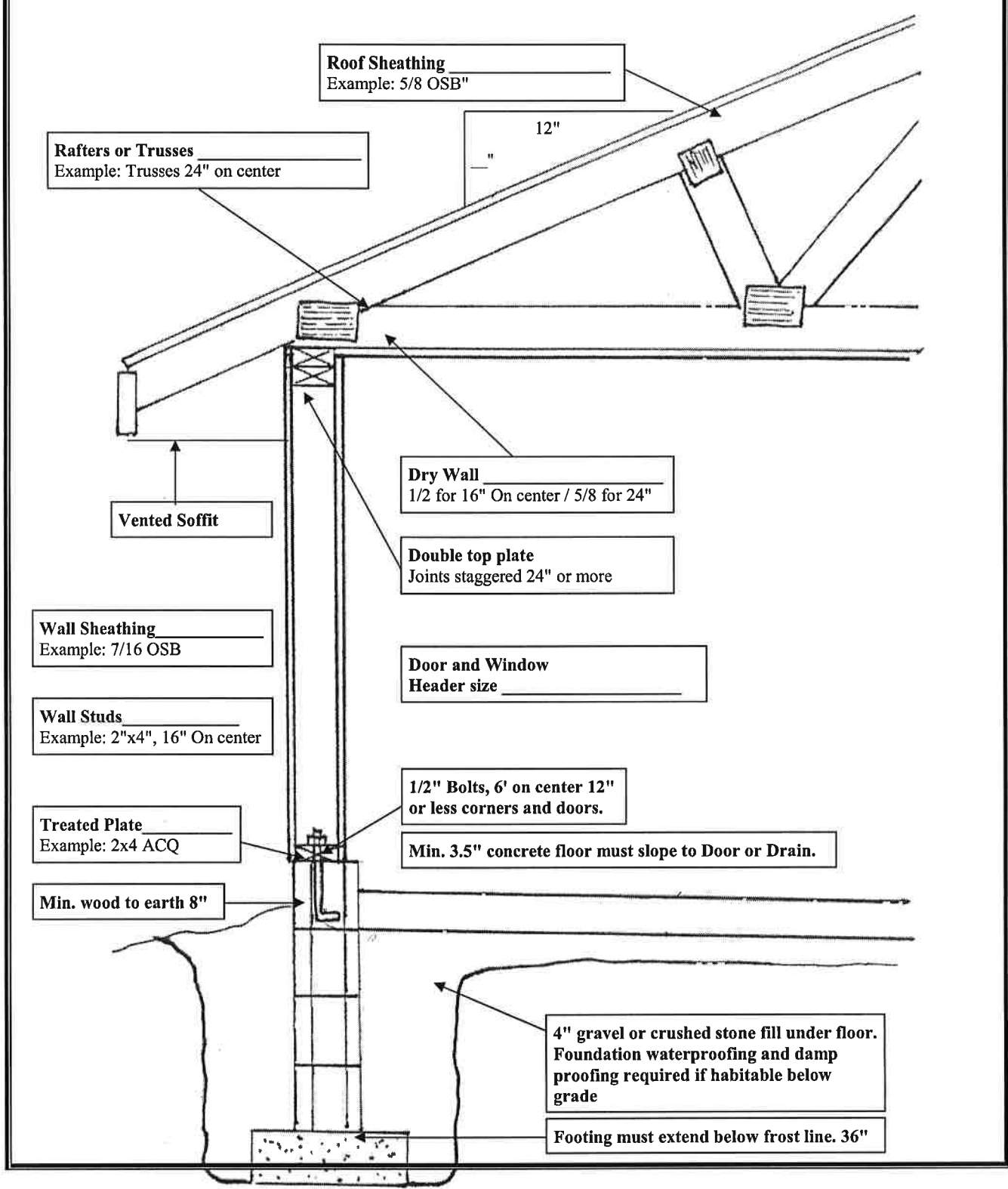
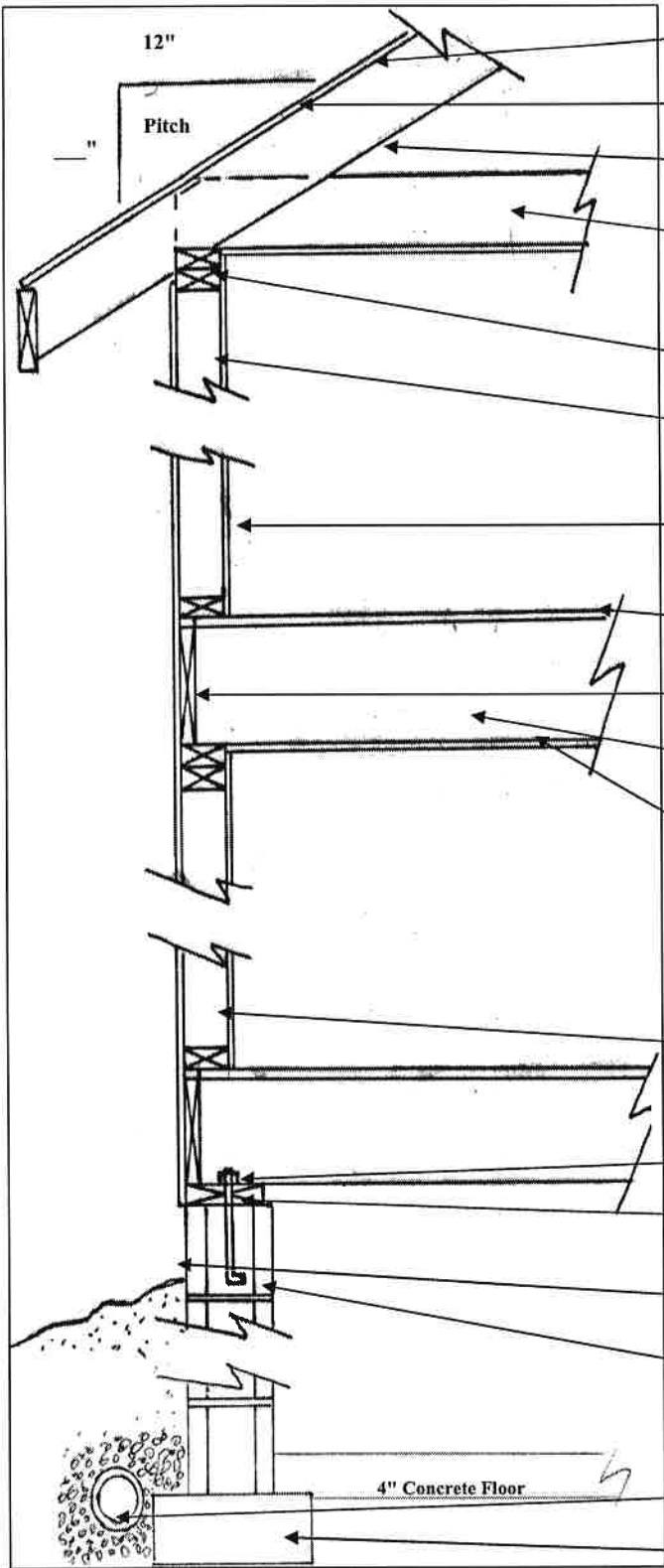


# SECTION



# CROSS SECTION



**Roof Sheathing** \_\_\_\_\_  
Example: 1/2 CDX Plywood

**Roof Covering** \_\_\_\_\_  
Example: 3 Tab Fiberglass Shingles

**Rafters / Trusses** \_\_\_\_\_  
Example: Trusses 24" on center

**Ceiling Joist** \_\_\_\_\_  
Example: 2 X 6, 16" on center

**Ventilation and access required for attic**

**Double Top Plate** \_\_\_\_\_  
Example: 2 X 4

**Bedrooms require egress window**  
5.7 SF and min. 20" W X 24" H

**Wall Sheathing** \_\_\_\_\_  
Example: 1/2" OSB

**Floor Sheathing** \_\_\_\_\_  
Example: 3/4 T + G OSB

**Head Joist** \_\_\_\_\_  
Example: Mi. 2 X Joist Size

**Floor Joist** \_\_\_\_\_  
Example: TJI 11 7/8", 16" on center

**Wall and ceiling covering** \_\_\_\_\_  
Example: 1/2 Dry Wall, TJI 11 7/8", 16" on center

**Hardwire smoke detectors required in bedrooms and every habitable floor.**

**Wall Stud** \_\_\_\_\_  
Example: 2" X 4", 16" on center

**Foundation Anchorage** \_\_\_\_\_  
Example: Bolt 1/2" X 10", 6' on center

**Treated Plate** \_\_\_\_\_  
Example: 2 X 8 treated

**Min. wood to earth 8"**

**Foundation** \_\_\_\_\_  
Example: 8" CMU (Block) wood to earth 8"

**Foundation waterproofing and damp proofing required if habitable below grade.**

**Footing size** \_\_\_\_\_  
Example: 16" wide X 12" deep